

Ouachita Trail Backpacking Guide

Talimena State Park to Upper Kiamchi



John D. “J.D.” Smith
Volume 1, Third Edition, August 2007

Table of Contents

<i>Ouachita Trail Backpacking Guide, Volume 1</i>	<i>1</i>
General Comments.....	1
References	2
Wildlife	2
Places of Interest	2
Dining Suggestions	2
Gear Shopping on the Road	3
National Forest Contact Information.....	3
Gas Stations In the Area.....	3
Special Thanks To.....	3
Author Contact Information.....	3
Suggested Routes.....	4
Difficulty Levels	4
Night Hikes on the Ouachita Trail	4
Talimena Segment – 16 miles	5
Kiamichi Segment – 6.8 miles	6
Deadman’s Gap Segment – 15 miles.....	7
Big Cedar Segment – 16.5 miles	10
Winding Stair to Big Cedar Segment – 6.5 miles.....	11
Talimena State Park to Big Cedar – 30 miles.....	12
Big Cedar to Upper Kiamichi (Arkansas State Line) – 16 miles	16
<i>Places of Interest</i>	<i>19</i>
Talimena State Park Campground.....	19
Talimena State Park Water Source.....	20
Talimena State Park Trailhead.....	21
Talimena Stream Water Source	22
Potato Hill Campsite.....	22
Kiamichi Campsite.....	24
Kiamichi Stream Water Source	25
Panorama Campsite.....	26
Road 6010 Intersection	27
Deadman’s Gap Stream Water Source	29
Deadman’s Gap Intersection Trailhead.....	30
Water Source 5.....	30
Cedar Campsite.....	31
Water Source 6	32
Old Road Campsite.....	33

Water Source 7	34
Wildhorse Campsite.....	35
Choctaw Campsite	36
Spur Campsite	37
Spur Intersection/Trailhead	38
Horsethief Campsite.....	39
Horsethief Spring Water Source.....	40
Road 6014 Intersection	41
Trail 67 Intersection.....	42
Winding Stair Trailhead.....	43
Winding Stair Backpacker Campsite.....	44
Winding Stair Campground.....	46
Winding Stair Campground Water Source	47
Fire Tower Campsite	48
The Saddle Campsite	50
Rough Mountain Campsite	51
Road 6023 Intersection/Campsite	52
Big Cedar Campsite	55
Big Cedar Creek Water Source	56
Big Cedar Trailhead	57
Water Source 11	62
Water Source 12	62
Water Source 13	62
Pashubbe Campsite.....	63
Pashubbe Trailhead	64
Wilton Mountain Campsite.....	66
Kerr Campsite	68
Kiamichi River Trailhead.....	69
River Valley Campsite	71
Quentin Campsite	73
Kiamichi River Water Sources	74
Pine Mountain Campsite	75
Kelsey Campsite	78
Riverside Campsite	79
Talimena Drive Sign/Water Source.....	80
Upper Kiamichi Campsite.....	81

Upper Kiamichi Trailhead	83
---------------------------------------	-----------

Ouachita Trail Backpacking Guide, Volume 1

General Comments

- The purpose of this guide is to help you plan your backpacking trek on the Ouachita Trail.
- This guide contains information known at the time it was collected and witnessed. It is your responsibility to consult with official resources for accurate and up to date information about the weather, trail, water supply, fire situations, hunting seasons, etc. It is also your responsibility to determine the capabilities of the trekking crew and to lead them on a safe and exciting expedition into the wilderness of the Ouachita National Forest. The author carries no responsibility for your trip.
- Water is scarce. Plan on bringing all the water your trekking crew will need for the duration of the trip.
- Poison ivy is all over the place. Those sensitive should wear pants, long sleeved shirts, and poison ivy blocking cream.
- Lots of ticks, bring a first aid kit with tweezers
- Most of the trail is rocky. Wear good sturdy hiking boots. Wearing thin soled shoes will injure the feet on these trails. Do not allow anybody on the trail without the proper footwear.
- The Ouachita Trail is marked with **BLUE** paint on trees and rocks spaced about 50 to 100 feet apart. Stay with blue to stay on the Ouachita Trail. Other trails intersect that have different color markings like yellow and white.
- Some parts of the trail are overgrown with grass, especially during wet periods. Look ahead for the blue mark on the tree or rock in front of you.
- GPS locations, distances, directions are approximate. Some are derived from topographic maps rather than captured on the trail.
- All locations and directions are relative to an eastbound heading from Talimena State Park
- If backpacking during hunting season be very careful and make sure that everybody in the trekking crew is wearing hunter orange, and hunter orange is put up around the campsite. Check the Oklahoma hunting seasons website for season dates.
- Distances on graphical profiles shown in the recommended route sections do not match the distances on the Ouachita National Recreation Trail map. This is because the trails in the database are not exact and do not include the many switchbacks along the trail. The official Ouachita National Forest map was used for Boy Scout backpacking merit badge purposes on all backpacking treks.
- Leave note on dash of vehicles when parked at trailheads and along Scenic Highway 1 so authorities and tow trucks will know that the vehicle is not abandoned
- Remember to register at trailheads so rangers know you are on the trail

References

- Ouachita National Forest website: <http://www.fs.fed.us/oonf/ouachita.htm>
- Oklahoma State Park website: <http://www.oklahomaparks.com>
- Oklahoma Hunting Seasons website: <http://www.wildlifedepartment.com/seasons.htm>
- Ouachita National Recreation Trail Map
- Ouachita Trail Guide, Third Edition, Tim Ernst
- Talimena Scenic Drive flyer, available at Ouachita National Forest information stations
- DeLorme Topo USA software
- Topozone: <http://www.topozone.com>
- Boy Scout Backpacking Merit Badge book

Wildlife

The following wildlife have been seen along the trail at various times.

- Black bear – June 2002
- Water Moccasin snake – June 2002, April 2005
- Squirrel – October 2005, November 2006
- Bobcat – April 2006
- Rattlesnake – April 2006
- Deer – April 2006 (saw 4 on this trip)
- Various birds

Places of Interest

Locations identified on the Ouachita Trail in this guide are called “Places of Interest.” There are several types of Places of Interest:

- Campground – an improved campground managed by forest service, with water, showers, and designated campsites
- Trailhead – location to park vehicle to enter the trail
- Campsite – location for a place to camp along the trail
- Water Source – location for a *possible* source of water. The Ouachita National Forest is generally dry, so don’t plan on being able to get water at these locations.
- Intersection – location where another hiking trail or road intersects the Ouachita Trail

Dining Suggestions

Places to eat along the route between Dallas/Fort Worth and Talihina, OK:

- McDonalds, Burger King, Braums – Exit 69 in Denison, TX on US 75
- McDonalds, Dairy Queen, Subway, Pizza Hut, Mazzio’s Pizza – Atoka, OK

Gear Shopping on the Road

For last minute gear, food, and water purchases:

- Walmart – Exit 69 in Denison, TX, on west side of highway
- Walmart – Atoka, OK, on west side of highway by Luv's Truck Stop

National Forest Contact Information

Be sure to call the National Forest for fire ban information and for water supply at Winding Stair Campground.

Kiamichi Ranger District
P.O. Box 577
Talihina, OK 74571
(918) 567-2326

Talimena State Park
Hwy 271 N
Talihina, OK 74571
(918) 567-2052

Gas Stations In the Area

If heading east from Talihina to get to your trailhead I suggest to stop and fill up your vehicle in Talihina, because if you don't it could be another 80 to 100 miles before you get back to Talihina. I, as well as other troop leaders, have sweated it a few times hoping to make it back to Talihina.

- Talihina, OK – several to choose from. Don't forget to check out the Big Foot Information Center while in town!
- Big Cedar, OK – there's a little station on the NW corner of the Highways 63 and 259. Looks like it closes early.
- Mena, AR – lots to choose from, but further east. But better than running out of gas!

Special Thanks To

- Troop 51 for giving me plenty of backpacking opportunities
- Paul Nelson for volunteering as a leader and going on many treks
- My sons Kyle and Blake for going on many trips with me
- And especially to my wife Suzanne for her support of my many hobbies

Author Contact Information

John D. "JD" Smith (Mr. JD)
Troop 51 Backpacking Merit Badge Counselor
Frisco, Texas
(214) 289-4290 cell
(972) 668-5315 home
johndsmith@grandecom.net

Suggested Routes

Difficulty Levels

These difficulty levels are for a reasonably fit Boy Scout and adult leader.

- Easy – a little effort, not many rocks on the trail
- Intermediate – a little harder
- Advanced – hardest level, either lots of rocks or steep trail to climb

Night Hikes on the Ouachita Trail

Have an adult who has experience with the Ouachita Trail lead the trekking crew with a strong flashlight. The Ouachita Trail is marked by blue paint on trees every 50 to 100 feet. Keep watching for the next blue mark on the tree ahead of you, even when the trail is evident. On a night hike sometimes the trail cannot be distinguished because it blends in to the landscape. When this happens, stop, look slowly around the trees with your flashlight for the blue trail marks. Backtrack a little if needed. Don't panic. As long as you have been following the trail the next trail marker shouldn't be more than 50 feet away. A backpacking buddy of mine (nicknamed the "Pack Mule" because he can haul a lot of gear effortlessly) and I did a night hike from Talimena trailhead to the Kiamichi campsite in the fog where there wasn't more than 50 feet or so of visibility. Keeping on the trail was a challenge that night!

Talimena Segment – 16 miles

- Out and back to Deadman's Gap
- Difficulty level: Easy to Intermediate
- All uphill until the Potato Hill Vista intersection. This is the hardest part of the segment. Take breaks as needed. When you reach the Potato Hill campsite area it is mostly downhill to the Kiamichi campsite.
- Great for night hike to Kiamichi and Panorama campsites on first night. If hiking at night to the Kiamichi campsite and you are not familiar with the campsite, it would be best to carry a GPS unit. The campsite is down off the trail and is hard to see at night unless you know what you are looking for. When you get to the campsite immediate area you will cross rocks where a stream sometimes flows. Right after you cross these rocks start looking down the hill to your right. The fire ring should be seen if you have a bright enough flashlight. The Panorama campsite is directly on the trail. You will see the fire ring about 10 feet north of the trail.
- The "Pack Mule" and I did this night hike in November 2004 in the fog. I was leading since I was familiar with the trail. We got to the rocks at the dry stream as described, but I kept going. My buddy asked me if this was the campsite off the trail on the right. I said that I didn't think so and kept on walking. Then he asked me again if I was sure. Because he asked again we stopped and walked down the hill in that direction, and sure enough there was the fire ring. Good thing he asked because we would have had to go further that night until we got to the Panorama Campsite. It was about 2:00am so we were both beat and needed some shut eye.
- Suggested campsites: Kiamichi, Panorama



Figure 1 - Talimena Trail Segment

Ouachita Trail Backpacking Guide – Talimena State Park to Upper Kiamichi

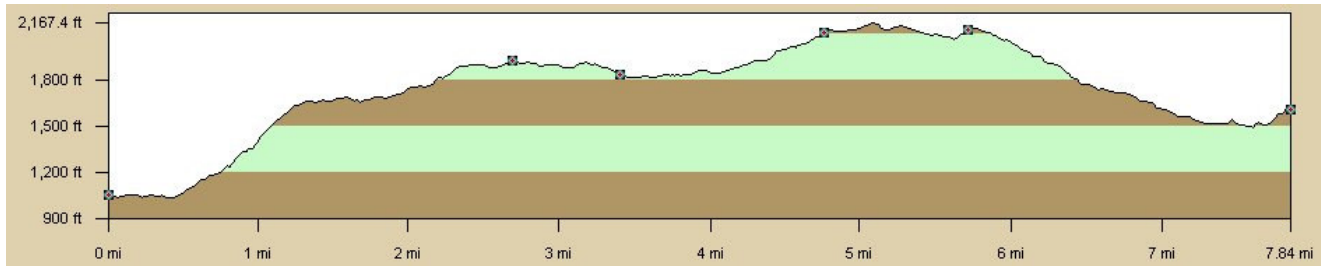


Figure 2 - Talimena Segment Profile

One way Profile:

Linear Distance: 7.8 miles
 Terrain Distance: 7.8 miles
 Climb Distance: 4.3 miles
 Descent Distance: 3.6 miles
 Elevation Gain: 548 feet
 Highest Elevation: 2167 feet
 Lowest Elevation: 1035 feet

Point of Interest	Accumulated Distance	Remaining Distance
Talimena State Park/Trailhead	0.00 mi	7.8 mi
Potato Hill Campsite	2.67 mi	5.13 mi
Kiamichi Campsite	3.38 mi	4.42 mi
Panorama Campsite	4.72 mi	3.08 mi
Road 6010 Int/Trailhead	5.67 mi	2.13 mi
Deadman's Gap Int/Trailhead	7.80 mi	0.00 mi

Kiamichi Segment – 6.8 miles

This is a shorter version of the Talimena Segment. It's just 6.8 miles round trip from Talimena State Park trailhead to the Kiamichi campsite. This is a good trail for first time backpackers. It is of course uphill until the Potato Hill Vista intersection. A great lunch stop is at the Potato Hill Vista where there is a beautiful view down the valley.

I took both of my sons on this trail segment for their first backpacking experience the summer between 4th and 5th grades. Neat thing happened on both first-time backpack trips: big thunderstorm both nights with lots of rain and a good lightning show.

Deadman's Gap Segment – 15 miles

- One way from Deadman's Gap to Winding Stair Campground
- Difficulty level: Easy to Advanced
- Lots of rocks on parts of this segment. Some steep climbs. Campsites for larger trekking crews are far apart. Be very careful, go slowly over the rocky portions so you don't twist or break an ankle. For an eastbound trek, by the time you reach the Old Road or Wildhorse campsites a lot of the less-fit backpackers might be thinking about bailing out when they reach the Spur trailhead. Don't let this happen! The hard part is over. I suggest to not even offer this as an option. From Spur to Winding Stair the trek is Easy. Smooth trail, mostly down hill.
- Suggested campsites: Old Road, Wildhorse, Spur, Winding Stair

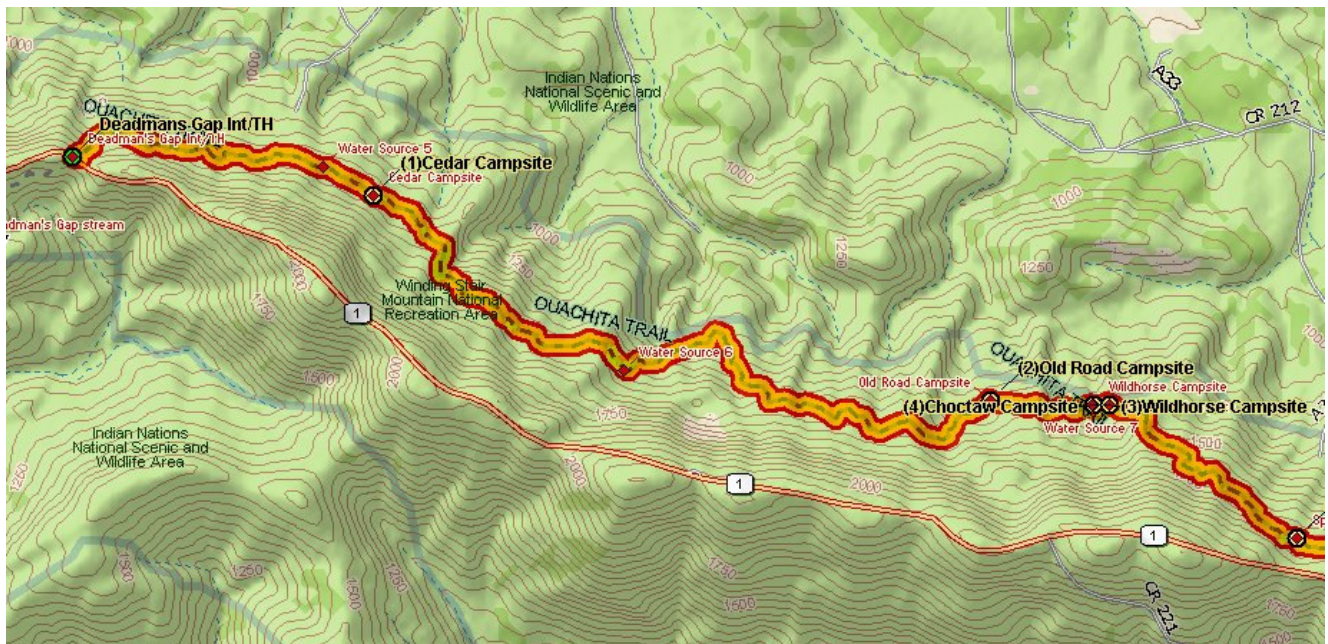


Figure 3 - Deadman's Gap West Portion

Ouachita Trail Backpacking Guide – Talimena State Park to Upper Kiamichi

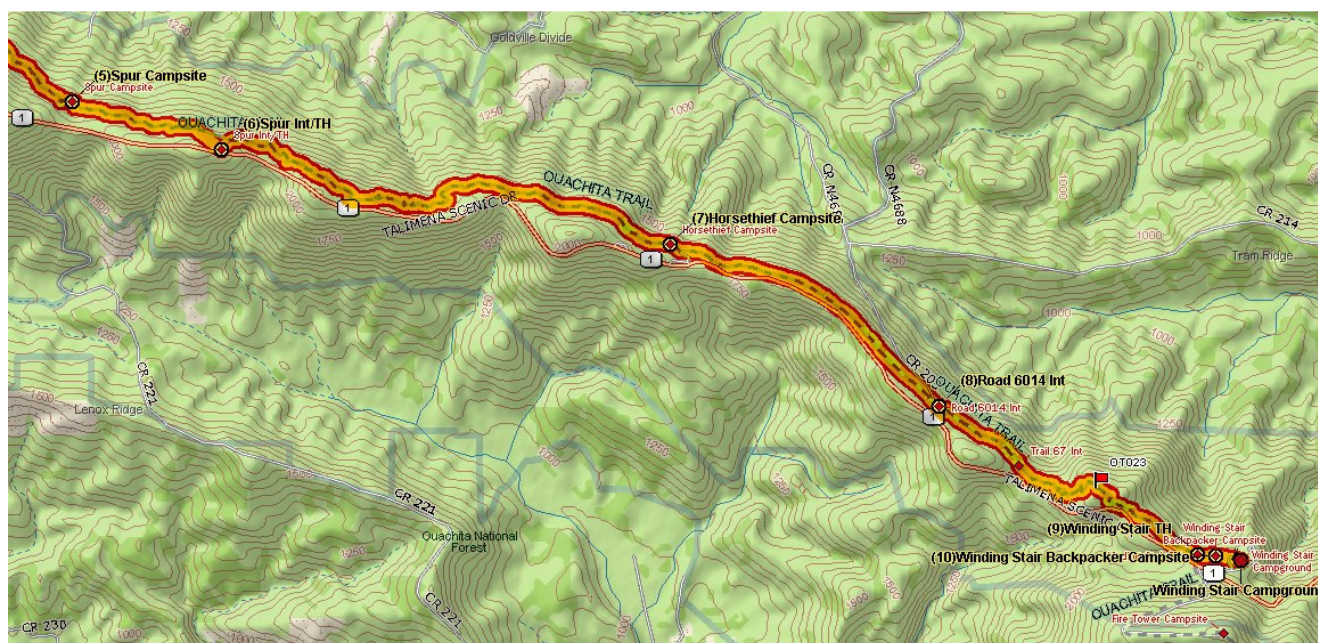


Figure 4 - Deadman's Gap East Portion

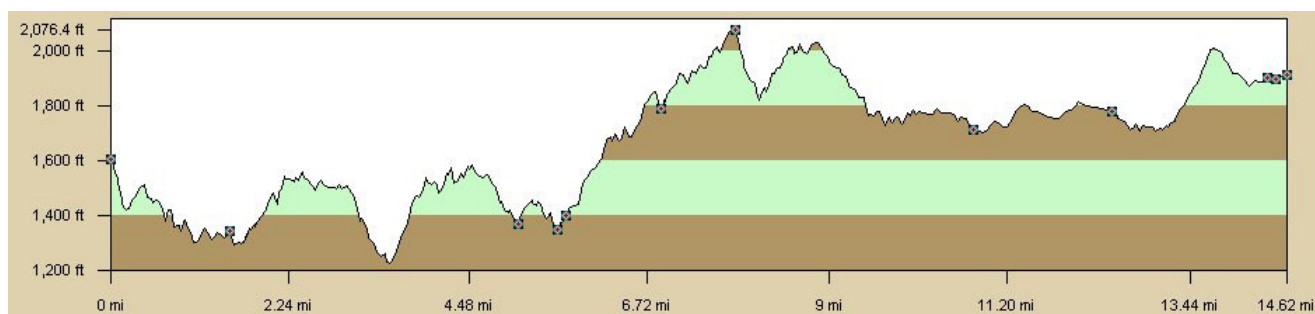


Figure 5 - Deadman's Gap Segment Profile

Linear Distance: 14.5 miles
 Terrain Distance: 14.6 miles
 Climb Distance: 7.4 miles
 Descent Distance: 7.2 miles
 Elevation Gain: 307 feet
 Highest Elevation: 1076 feet
 Lowest Elevation: 1222 feet

Ouachita Trail Backpacking Guide – Talimena State Park to Upper Kiamichi

Point of Interest	Accumulated Distance	Remaining Distance
Deadman's Gap Int/Trailhead	0.00 mi	14.53 mi
Cedar Campsite	1.48 mi	13.05 mi
Old Road Campsite	5.05 mi	9.48 mi
Wildhorse Campsite	5.53 mi	9.00 mi
Choctaw Campsite	5.63 mi	8.90 mi
Spur Campsite	6.81 mi	7.72 mi
Spur Int	7.72 mi	6.81 mi
Horsethief Campsite	10.67 mi	3.86 mi
Road 6014 Int	12.38 mi	2.15 mi
Winding Stair Trailhead	14.29 mi	0.24 mi
Winding Stair Backpacker Campsite	14.40 mi	0.13 mi
Winding Stair Campground	14.53 mi	0.00 mi

Big Cedar Segment – 16.5 miles

- Out and back from Big Cedar trailhead to Road 6014 Intersection
- Difficulty level: Easy to Intermediate
- Has largest elevation change, great place to train for steeper trails in the Rocky Mountains
- Switchbacks from The Saddle campsite seem like they go on forever
- Great for night hike to Road 6023 campsite, which is just a couple miles up the Ouachita Trail from Big Cedar trailhead. Road 6023 campsite is easy to find at night. When you get to the road intersection the big fire ring is just to the left of the trail. Can't miss it.
- When you reach Road 1014 Intersection turn around and go back to camp at the Winding Stair backpacker's campsite. This campsite costs money, so be prepared to pay.
- Suggested campsites: Winding Stair backpacker's campsite, Road 6023 campsite, The Saddle, Big Cedar campsite



Figure 6 - Big Cedar Segment

Ouachita Trail Backpacking Guide – Talimena State Park to Upper Kiamichi

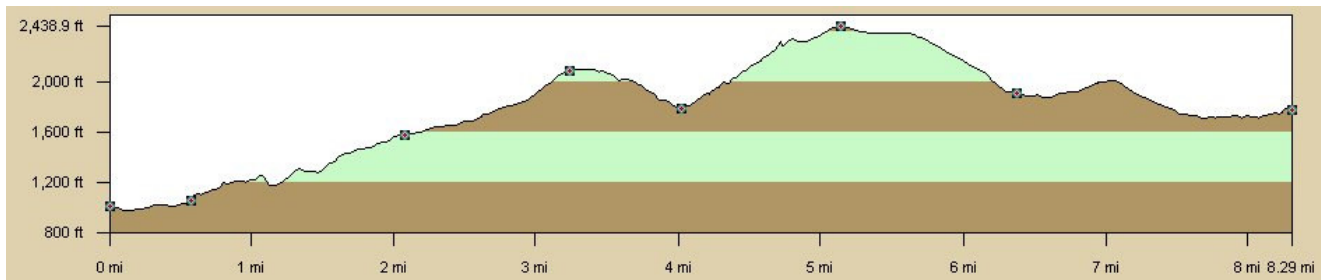


Figure 7 - Big Cedar Segment Profile

One way profile:

Linear Distance: 8.2 miles
 Terrain Distance: 8.3 miles
 Climb Distance: 4.8 miles
 Descent Distance: 3.5 miles
 Elevation Gain: 772 feet
 Highest Elevation: 2438 feet
 Lowest Elevation: 972 feet, at Big Cedar Creek

Point of Interest	Accumulated Distance	Remaining Distance
Big Cedar Trailhead	0.00 mi	8.24 mi
Big Cedar Campsite	0.57 mi	7.67 mi
Road 6023 Campsite/Int	2.07 mi	6.17 mi
Rough Mountain Campsite	3.21 mi	5.03 mi
The Saddle Campsite	3.99 mi	4.25 mi
Fire Tower Campsite	5.10 mi	3.14 mi
Winding Stair Trailhead Winding Stair Backpacker CS Winding Stair Campsite	6.32 mi	1.92 mi
Road 6014 Int	8.24 mi	0.00 mi

Winding Stair to Big Cedar Segment – 6.5 miles

This is a shorter version of the Big Cedar Segment. It is also a great trail segment for first time or young backpackers. Start at Winding Stair trailhead and hike to the Road 6023 campsite. Hardest part of the trail is the first hill that goes up an old road to the Fire Tower campsite. There is just one more climb after this going up Rough Mountain. It is rocky. My younger son was complaining about all the rocks hurting his feet. This was his second backpacking trip.

Talimena State Park to Big Cedar – 30 miles

- One way from Talimena trailhead to Big Cedar trailhead, or opposite
- Great for night hike to Kiamichi or Panorama campsites on first night
- With lack of water need chaser car to provide water
- Chaser vehicle can meet the trekking crew:
 - Panorama campsite – park at Panorama Vista. Take trail down from Panorama Vista, at intersection go west (turn right), campsite is ¼ mile or so down the trail
 - Road 6010 Intersection
 - Deadman's Gap for water refill
 - Spur for water refill. No parking here, so can't meet the crew on the trail for overnight camping
 - Horsethief Spring on the trail
 - Road 6014 Intersection
 - Winding Stair Campground
 - Road 6023 campsite. Drive up forest road 6023.
- If a chaser car is not available, add time to your planned trekking day for moving vehicles around. For an east bound trek:
 - Park a vehicle at Deadman Vista, leave a vehicle at Talimena State Park
 - At Deadman Vista refill water
 - Go retrieve the vehicle at Talimena State Park
 - Park a vehicle at Winding Stair. On the way there, or on the way back, leave water at the Spur for refill. Leave a vehicle again at Deadman Vista.
 - Be sure everybody has enough water between Deadman's Gap and the Spur
 - Easy hike from Spur to Winding Stair. Won't take more than a few hours, so don't need much water on trail.
 - When reach Winding Stair retrieve vehicle at Deadman Vista
 - Take vehicle to Big Cedar trailhead
- Suggested campsites: Kiamichi, Panaroma, Old Road, Choctaw, Spur, Winding Stair, Road 6023

Ouachita Trail Backpacking Guide – Talimena State Park to Upper Kiamichi



Figure 8 - Talimena State Park to Big Cedar, West Portion

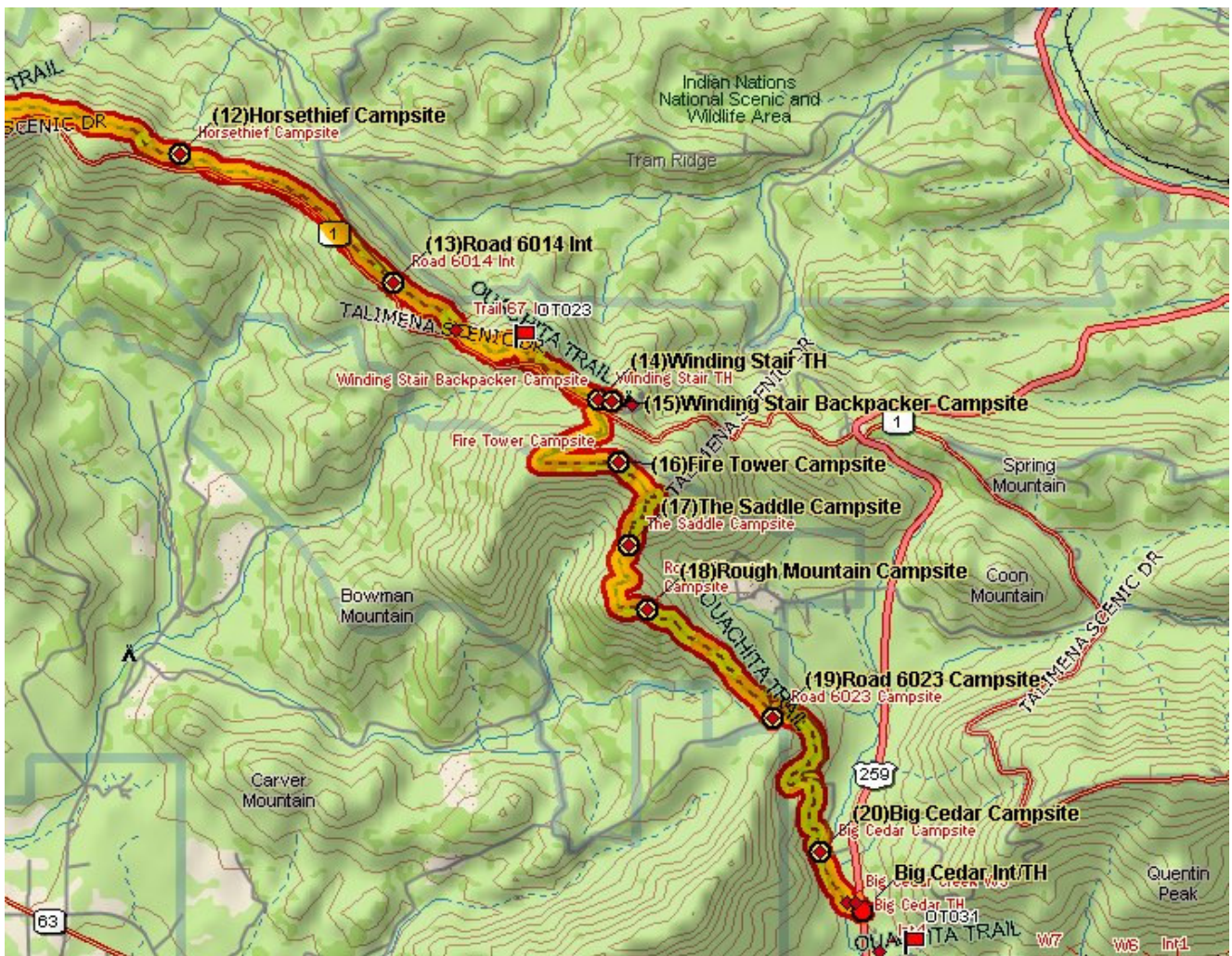


Figure 9 - Talimena State Park to Big Cedar, East Portion

Ouachita Trail Backpacking Guide – Talimena State Park to Upper Kiamichi

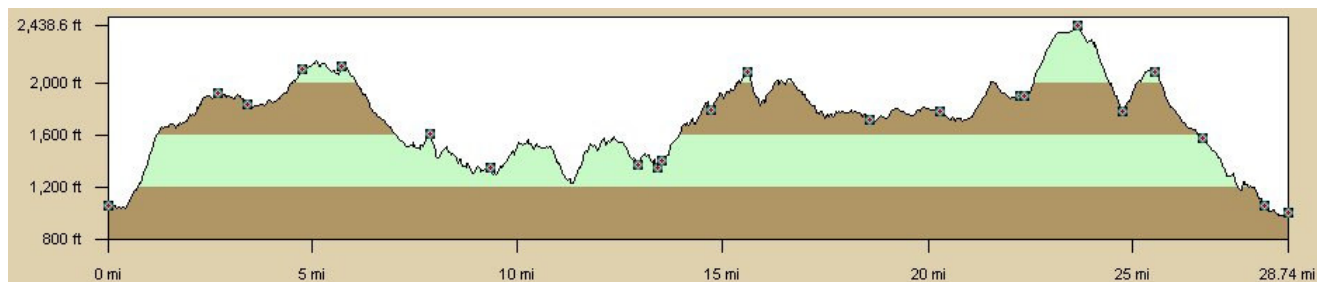


Figure 10 – Talimena State Park to Big Cedar Profile

Linear Distance: 28.6 miles
Terrain Distance: 28.7 miles
Climb Distance: 13.8 miles
Descent Distance: 14.9 miles
Elevation Gain: -49 feet
Highest Elevation: 2438 feet
Lowest Elevation: 974 feet, at Big Cedar Creek

Ouachita Trail Backpacking Guide – Talimena State Park to Upper Kiamichi

Point of Interest	Accumulated Distance	Remaining Distance
Talimena State Park/Trailhead	0.00 mi	28.58 mi
Potato Hill Campsite	2.67 mi	25.91 mi
Kiamichi Campsite	3.38 mi	25.20 mi
Panorama Campsite	4.72 mi	23.86 mi
Road 6010 Int/Trailhead	5.67 mi	22.91 mi
Deadman's Gap Int/Trailhead	7.80 mi	20.78 mi
Cedar Campsite	9.28 mi	19.30 mi
Old Road Campsite	12.85 mi	15.73 mi
Wildhorse Campsite	13.33 mi	15.25 mi
Choctaw Campsite	13.43 mi	15.16 mi
Spur Campsite	14.61 mi	13.97 mi
Spur Int/TH	15.52 mi	13.07 mi
Horsethief Campsite	18.47 mi	10.11 mi
Road 6014 Int	20.18 mi	8.41 mi
Winding Stair Trailhead	22.09 mi	6.49 mi
Winding Stair Backpacker CS	22.20 mi	6.39 mi
Fire Tower Campsite	23.49 mi	5.10 mi
The Saddle Campsite	24.60 mi	3.98 mi
Rough Mountain Campsite	25.38 mi	3.20 mi
Road 6023 Int/Campsite	26.51 mi	2.07 mi
Big Cedar Campsite	28.02 mi	0.57 mi
Big Cedar Trailhead	28.58 mi	0.00 mi

Big Cedar to Upper Kiamichi (Arkansas State Line) – 16 miles

- Big Cedar trailhead to Upper Kiamichi trailhead (Arkansas State Line)
- Difficulty level: Easy to Intermediate
- Another great night hike from Big Cedar to Pashubbe Trailhead, which is just 3 miles
 - A vehicle can meet the trekking crew at the Pashubbe Trailhead. Entrance is just south of the Big Cedar trailhead entrance, about half a mile.
- The trail segment map and profile figures below are not accurate east of the Talimina Drive sign. The Ouachita Trail was redirected to take a more northerly turn at the sign rather than going straight like it used to. This added one mile to the published distance. The trail map shows 15 miles, but actual miles is closer to 16.
- East of Pashubbe Trailhead there is only one place that a vehicle can get to the Ouachita Trail, which is at the Kiamichi River Trailhead. Take road 6032 north from Highway 63.
- Cell phone coverage in the Kiamichi River Valley is non-existent.
- The trails along the Kiamichi River are old forest roads that are relatively flat. These roads make good campsites if the established campsites cannot be reached. But there are plenty of established sites along the trail, so this shouldn't be a problem.
- Water is plentiful on this segment: stream crossings between Big Cedar and Pashubbe trailheads, then the trail crosses the Kiamichi River many times to the east of the Kiamichi River Trailhead. There are at least four campsites that are right next to the Kiamichi River. Last water source eastbound is at the Talimina Drive Sign. The only time water is not available is when the trail is on the mountains.
- Suggested campsites: Pashubbe, River Valley, Pine Mountain, Riverside, Upper Kiamichi

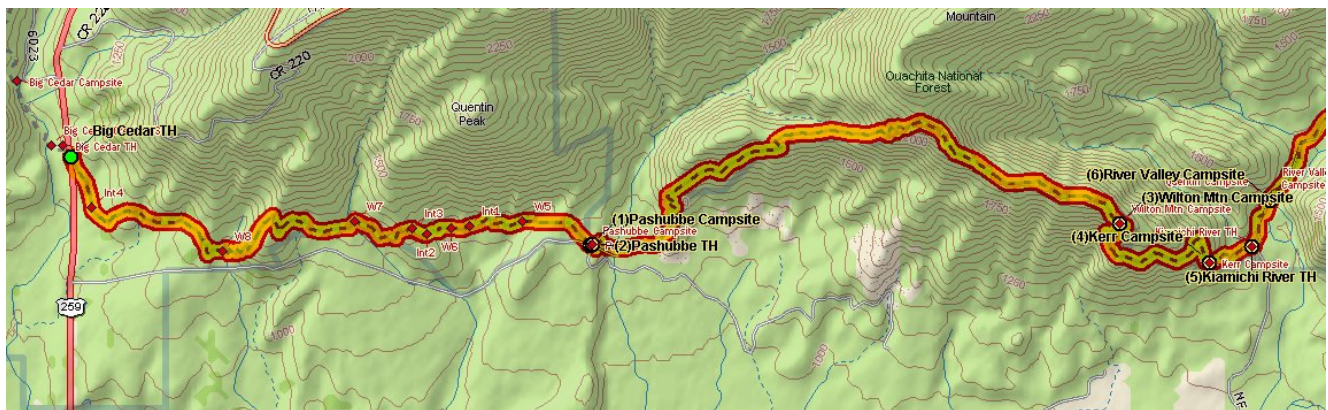


Figure 11 - Big Cedar to Upper Kiamichi, West Portion

Ouachita Trail Backpacking Guide – Talimena State Park to Upper Kiamichi

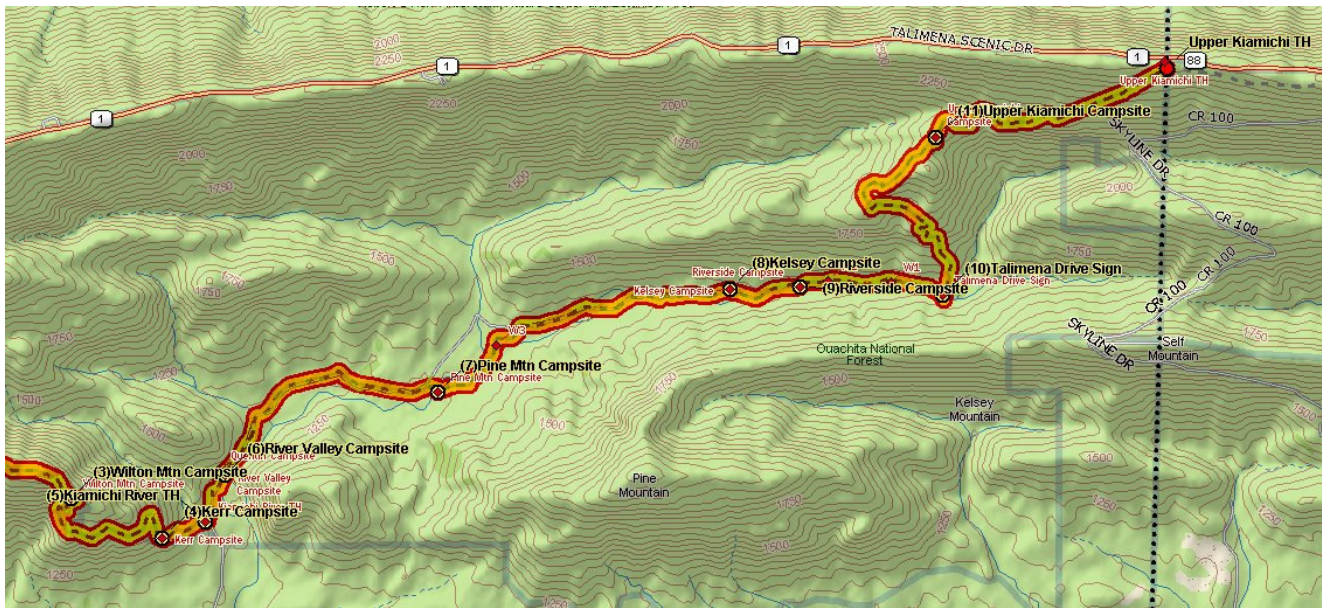


Figure 12 - Big Cedar to Upper Kiamichi, East Portion

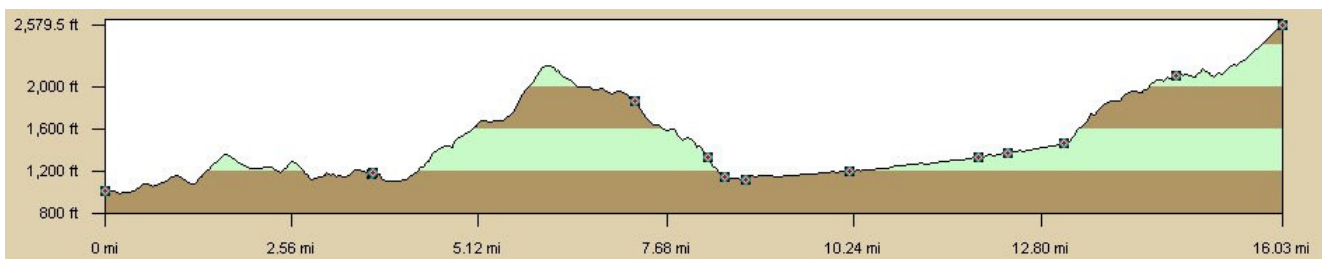


Figure 13 - Big Cedar to Upper Kiamichi Profile

Linear Distance: 16.0 miles
 Terrain Distance: 16.0 miles
 Climb Distance: 9.5 miles
 Descent Distance: 6.5 miles
 Elevation Gain: 1574 feet
 Highest Elevation: 2579 feet, at Upper Kiamichi Trailhead, highest elevation on Ouachita Trail
 Lowest Elevation: 1012 feet, at Big Cedar Trailhead

Ouachita Trail Backpacking Guide – Talimena State Park to Upper Kiamichi

Point of Interest	Accumulated Distance	Remaining Distance
Big Cedar Trailhead	0.00 mi	15.96 mi
Pashubbe Campsite/Trailhead	3.63 mi	12.33 mi
Wilton Mountain Campsite	7.18 mi	8.78 mi
Kerr Campsite	8.17 mi	7.79 mi
Kiamichi River Trailhead	8.41 mi	7.55 mi
River Valley Campsite Quentin Campsite	8.69 mi	7.27 mi
Pine Mountain Campsite	7.37 mi	9.17 mi
Kelsey Campsite	11.86 mi	4.11 mi
Riverside Campsite	12.24 mi	3.72 mi
Talimena Drive Sign	13.00 mi	2.96 mi
Upper Kiamichi Campsite	14.53 mi	1.43 mi
Upper Kiamichi Trailhead	15.96 mi	0.00 mi

Places of Interest

Talimena State Park Campground

Type: Campground Name: Talimena State Park GPS Lat/Lon: 34° 46.975'N 94° 57.053'W GPS Elevation: 1076 GPS Odometer: 0 OT Mile marker: 0	Price for camping: \$8/tent site Price for parking: \$5/day at trailhead Showers available? Yes How many showers? 2 men, 2 women Hot water? Yes Location from trail: at start of Ouachita Trail
Notes: Start (or end) of the Ouachita Trail. Perfect place for the first night. Park ranger drives around in the morning to collect camp fees. Preferred shower area at the end of a trek to clean up before heading back home. A bit pricey to stay here though. When a lot of scouts are at this campsite they charge <i>per tent</i> , not per campsite like the sign states. Be prepared to pay \$5-8 for each tent.	



Figure 14 - Talimena State Park handicap bathroom and showers



Figure 15 - Talimena State Park bathroom facility

Talimena State Park Water Source

Site sequence: Water source 1 Given name: Talimena State Park GPS Lat/Lon: 34° 46.975'N 94° 57.053'W GPS Elevation: 1076	GPS Odometer: OT Mile marker: Location from trail: at start of Ouachita Trail
Notes: Water available in restrooms.	

Talimena State Park Trailhead

Type: Trailhead	Price for parking: \$5/day per vehicle
Name: Talimena State Park Trailhead	GPS Odometer: 0
GPS Lat/Lon: 34° 46.975'N 94° 57.053'W	OT Mile marker: 0
GPS Elevation: 1076	Location from trail: start of Ouachita Trail
Notes: Entry for east trek. Register at trailhead. Parking is \$5 per day.	



Figure 16 - Talimena State Park Trailhead registration and parking



Figure 17 - Troop 51 Scouts at Ouachita National Forest marker sign

Talimena Stream Water Source

Site sequence: Water source 2 Given name: Talimena stream GPS Lat/Lon: 34° 47.216'N 94° 56.884'W GPS Elevation: 1054	GPS Odometer: OT Mile marker: Location from trail: intersects
Notes: Usually running, but can be dry	

Potato Hill Campsite

Site sequence: Campsite 1 Given name: Potato Hill GPS Lat/Lon: 34° 47.53'N 94° 55.128'W GPS Elevation: 1883 GPS Odometer: OT Mile marker: Fire ring? Half ring Num fire seats: 2	Num tents: 8-10 Closest access point: Potato Hill Vista Nearest water source: Talimena State Park Cell phone coverage: Cingular digital, Sprint analog Firewood supply: Plentiful Location from trail: off trail 50' to left
Notes: At top of ridge, exposed to wind	



Figure 18 - Potato Hill Vista access trail intersection



Figure 19 - Potato Hill campsite

Kiamichi Campsite

Site sequence: Campsite 2 Given name: Kiamichi GPS Lat/Lon: 34° 47.562'N 94° 54.529'W GPS Elevation: 1775 GPS Odometer: OT Mile marker: Fire ring? Yes Num fire seats: 7	Num tents: 6 Closest access point: Potato Hill Vista or Panorama Vista Nearest water source: Kiamichi stream when water is present Cell phone coverage: Spring analog, Cingular Firewood supply: Plentiful Location from trail: down hill to S about 100 feet
Notes: Rocky, good seats, protected from wind, when water in stream water source available	



Figure 20 - Kiamichi campsite April 2006



Figure 21 - Kiamichi campsite June 2002

Kiamichi Stream Water Source

Site sequence: Water source 3 Given name: Kiamichi stream GPS Lat/Lon: 34° 47.562'N 94° 54.529'W GPS Elevation: 1775	GPS Odometer: OT Mile marker: Location from trail: intersects trail, and by campsite
Notes: Seems to be dry most the time	



Figure 22 - Kiamichi stream June 2002

Panorama Campsite

Site sequence: Campsite 3 Given name: Panorama GPS Lat/Lon: 34° 46.649'N 94° 54.333'W GPS Elevation: 2110 GPS Odometer: OT Mile marker: Fire ring? Yes Num fire seats: 6, rocks and logs	Num tents: 8 Closest access point: Panorama Vista Nearest water source: none Cell phone coverage: Cingular 5 bars, Sprint analog 2 bars Firewood supply: Plentiful Location from trail: Right on trail
Notes: Trees are not very dense. Very short hike to Panorama Vista access point. Good campsite for chaser car driver for overnight camping with the trekking crew.	



Figure 23 - Panorama campsite

Road 6010 Intersection

Type: Intersection Name: Road 6010 Intersection GPS Lat/Lon: 34° 46.231'N 94° 53.531'W GPS Elevation: 2047	GPS Odometer: OT Mile marker: Location from trail: On Price for parking: 0
Notes: Road intersection. 2.3 miles to Deadman's Gap, back to Talimena State Park 6 miles. Good parking place on east side of intersection.	



Figure 24 – Road 6010 Intersection looking east



Figure 25 – Road 6010 Intersection looking west



Figure 26 - Ouachita Trail Mile Marker 7, between Road 6010 and Deadman's Gap

Deadman's Gap Stream Water Source

Site sequence: Water source 4 Given name: Deadman's Gap stream GPS Lat/Lon: 34° 46.068'N 94° 52.770'W GPS Elevation: 1511	GPS Odometer: OT Mile marker: Location from trail: intersects
Notes: Dirty	



Figure 27 - Water Source 4, Deadman's Gap stream

Deadman's Gap Intersection Trailhead

Type: Intersection/Trailhead	GPS Odometer:
Name: Deadman's Gap Int/TH	OT Mile marker:
GPS Lat/Lon: 34° 46.333'N 94° 52.319'W	Location from trail: Intersects
GPS Elevation: 1540	Price for parking: 0
Notes: Closest parking at intersection/trailhead is ¼ mile to the west at Deadman Vista	



Figure 28 - Deadman's Gap trail sign, looking west

Water Source 5

Site sequence: Water source 5	GPS Odometer:
Given name:	OT Mile marker:
GPS Lat/Lon: 34° 46.297'N 94° 51.226'W	Location from trail: intersects
GPS Elevation: 1263	
Notes: Barely flowing, nowhere to sit, lots of poison ivy	

Cedar Campsite

Site sequence: Campsite 4 Given name: Cedar GPS Lat/Lon: 34° 46.194'N 94° 51.004'W GPS Elevation: 1347 GPS Odometer: OT Mile marker: Fire ring? Yes Num fire seats: 0	Num tents: 1-2 maybe Closest access point: Deadman's Gap trailhead Nearest water source: none Cell phone coverage: Cingular 3 bars, Sprint analog 3 bars Firewood supply: Plentiful Location from trail: On trail
Notes: Not very good campsite, especially for large groups. Don't plan on this one.	



Figure 29 - Cedar campsite

Water Source 6

Site sequence: Water source 6 Given name: GPS Lat/Lon: 34° 45.567'N 94° 49.907'W GPS Elevation: 1481	GPS Odometer: OT Mile marker: Location from trail: intersects trail
Notes: Flowing in April 2006	

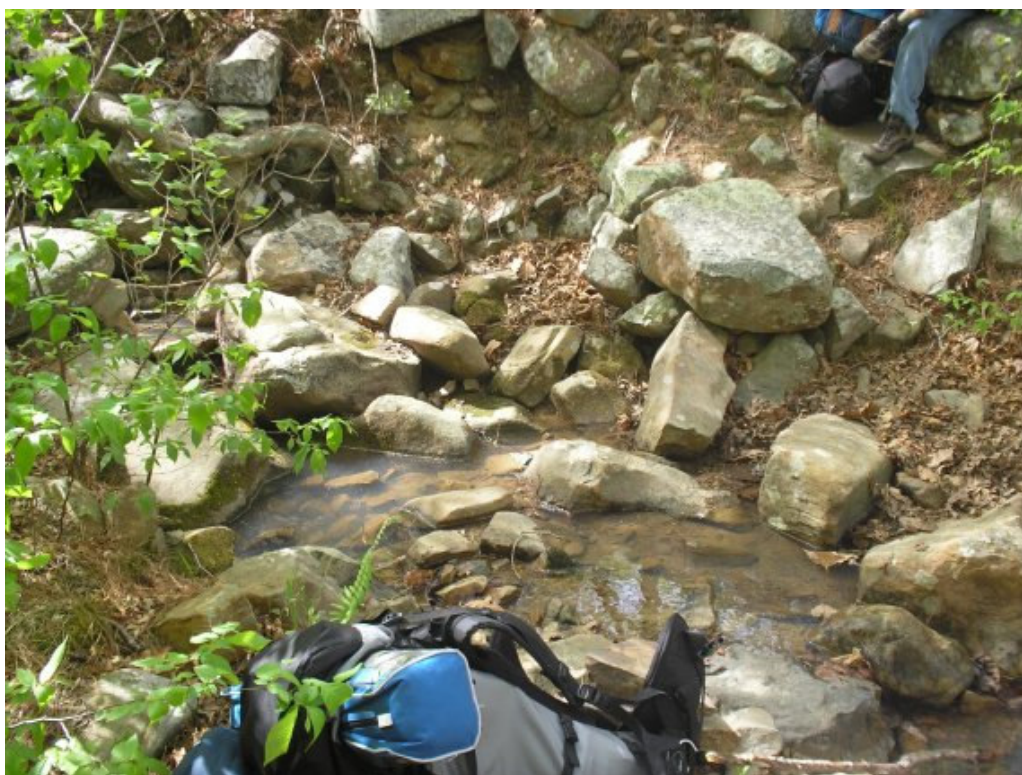


Figure 30 - Water Source 6, with flowing water

Old Road Campsite

Site sequence: Campsite 5 Given name: Old Road GPS Lat/Lon: 34° 45.458'N 94° 48.301'W GPS Elevation: 1397 GPS Odometer: OT Mile marker: Fire ring? No	Num fire seats: N/A Num tents: A lot Closest access point: Deadman's Gap trailhead Nearest water source: none Cell phone coverage: Cingular 3 bars Firewood supply: Plentiful Location from trail: On trail
Notes: On old road, lots of rocks, poison ivy. Use for plan B if can't make the planned established site. A good service project would be to build a fire ring at this location, and to clear rocks from the road to make it a smoother surface for camping on.	



Figure 31 - Old Road campsite

Water Source 7

Site sequence: Water source 7 Given name: GPS Lat/Lon: 34° 45.443'N 94° 47.860'W GPS Elevation: 1373	GPS Odometer: OT Mile marker: Location from trail: intersects trail
Notes: Old trail sign falling down on west side of stream. Can't see water, but can hear trickling through the rocks. Water was visibly flowing in April 2005, but not in April 2006.	



Figure 32 - Water Source 7

Wildhorse Campsite

Site sequence: Campsite 6	Num fire seats: N/A
Given name: Wildhorse	Num tents: 3
GPS Lat/Lon: 34° 45.444'N 94° 47.850'W	Closest access point: spur
GPS Elevation: 1393	Nearest water source: water source 7
GPS Odometer:	Cell phone coverage: Cingular 3 bars
OT Mile marker:	Firewood supply: Plentiful
Fire ring? No	Location from trail: to left 50 feet

Notes: Rocky, remnants of a fire ring exist, close to water if stream is running. Suggested service project is to rebuild the fire ring and clear the area of rocks to make it smoother for tents.



Figure 33 - Wildhorse campsite

Choctaw Campsite

Site sequence: Campsite 7 Given name: Choctaw GPS Lat/Lon: 34° 45.446'N 94° 47.782'W GPS Elevation: 1452 GPS Odometer: OT Mile marker: Fire ring? Yes	Num fire seats: 9 Num tents: 10 Closest access point: Spur Nearest water source: Water source 7 by Wildhorse campsite Cell phone coverage: Cingular Firewood supply: Plentiful Location from trail: to the left of trail 20 feet
Notes: Very nice campsite, easy to see from the trail, flat area	

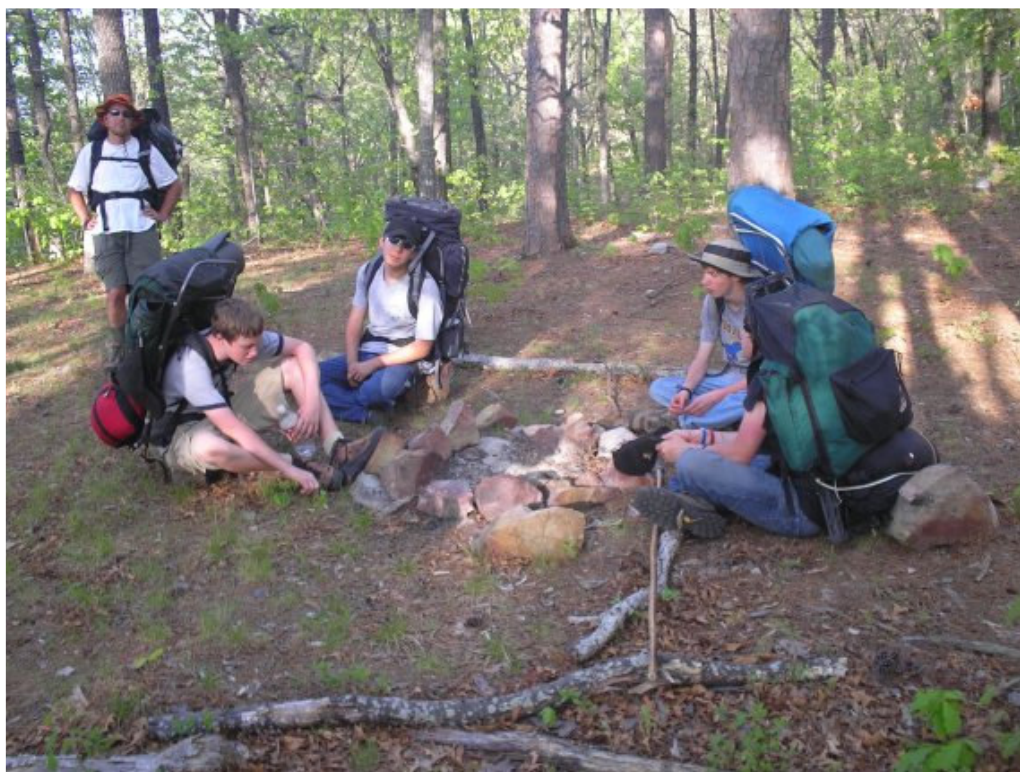


Figure 34 - Choctaw campsite

Spur Campsite

Site sequence: Campsite 8	Num fire seats: 2
Given name: Spur	Num tents: 4-5
GPS Lat/Lon: 34° 44.965'N 94° 46.960'W	Closest access point: spur
GPS Elevation: 1821	Nearest water source: from car at spur
GPS Odometer:	Cell phone coverage: Cingular
OT Mile marker:	Firewood supply: Plentiful
Fire ring? Yes	Location from trail: on trail
Notes: Tick infested, lots of poison ivy around area. Big fallen tree right past campsite. Nice view down the valley on the north side. If this is the planned campsite for the Deadman's Gap or 30 mile segments, there will need to be a big push at the end of the day to make it here before dark. From the Choctaw campsite it is mostly uphill. You will be tired, but keep pushing and you will make it just fine. The hardest part of the Ouachita trail between Talimena State Park and Big Cedar will be over with. It will be an easy trek from this point on.	



Figure 35 - Spur campsite

Spur Intersection/Trailhead

Type: Intersection/Trailhead	GPS Odometer:
Name: Spur	OT Mile marker:
GPS Lat/Lon: 34° 44.747'N 94° 46.140'W	Location from trail: On
GPS Elevation: 2080	Price for parking: can't park here
Notes: East of Lenox Vista (about 3 hills?). Top of hill, on lower east side. Spur is on the north side of Highway 1. Not marked. At the time 3 rocks were stacked. Temporary parking for water replenishing.	



Figure 36 - Spur Intersection trail sign



Figure 37 - Spur access point. Note rocks piled up on R picture.



Figure 38 - Highway 1 looking east at Spur

Horsethief Campsite

Site sequence: Campsite 9 Given name: Horsethief GPS Lat/Lon: 34° 44.321'N 94° 43.669'W GPS Elevation: 1685 GPS Odometer: OT Mile marker: Fire ring? Yes Num fire seats: 0	Num tents: 2 Closest access point: Horsethief Spring Nearest water source: Horsethief Spring Cell phone coverage: Cingular Firewood supply: Plentiful Location from trail: 50 feet down hill from intersection
Notes: Don't bother with this one either.	

Horsethief Spring Water Source

Site sequence: Water source 8 Given name: Horsethief Spring GPS Lat/Lon: GPS Elevation:	GPS Odometer: OT Mile marker: Location from trail: up hill at Horsethief Spring
Notes: Spring contained in stone housing. Water barely flowing, fires burnt in the building. Water might be available up at the restrooms by road. From Ouachita Trail follow signs to Horsethief Spring. Take access road up to restrooms.	



Figure 39 - Horsethief Spring



Figure 40 - Horsethief Spring access road

Road 6014 Intersection

Type: Intersection Name: Road 6014 Intersection GPS Lat/Lon: 34° 43.59'N, 94° 42.19'W approx GPS Elevation: 1780 approx	Price for parking: can't park here GPS Odometer: OT Mile marker: Location from trail: intersects
Notes: Dirt road intersection east of Horsethief Spring, west of Winding Stair Campground. No parking area. Convenient place for chaser car to meet. Lat/Lon and elevation was taken from topographic map on Topozone website.	



Figure 41 - Road 6014 Intersection, looking east

Trail 67 Intersection

Type: Intersection Name: Trail 67 Intersection GPS Lat/Lon: 34° 43.322'N, 94° 41.756'W approx GPS Elevation: 1730 approx	Price for parking: N/A GPS Odometer: OT Mile marker: Location from trail: intersects
Notes: Trail 67 goes south from the Ouachita trail and crosses Highway 1. This intersection was not captured during the actual hike, it was derived from the Ouachita Trail map and Topographic software. Therefore locations are approximate.	

Winding Stair Trailhead

Type: Trailhead Name: Winding Stair trailhead GPS Lat/Lon: 34° 42.92'N, 94° 40.77'W approx GPS Elevation: 1900 approx	Price for parking: 0 GPS Odometer: OT Mile marker: Location from trail: on trail
Notes: Parking right next to trailhead. Restroom, solar heating panels in parking lot. Highway 1 200 feet to south. Backpackers campsite 500 feet towards Winding Stair Campground.	



Figure 42 - Winding Stair trailhead registration



Figure 43 - Winding Stair trailhead

Winding Stair Backpacker Campsite

Site sequence: Campsite 10	Num fire seats: None
Given name: Winding Stair Backpacker	Num tents: 3 in designated areas, but can fit many more around
GPS Lat/Lon: 34° 42.913'N 94° 40.667'W	Closest access point: Winding Stair trailhead
GPS Elevation: 1918	Nearest water source: Winding Stair Campground
GPS Odometer:	Cell phone coverage: Cingular
OT Mile marker:	Firewood supply: Plentiful
Fire ring? Yes, improved metal cylinder with fire grate	Location from trail: off of Ouachita Trail 500 feet
Notes: Great campsite, has two picnic tables, nice fire ring, costs \$3 per tent	



Figure 44 - Winding Stair backpacker camp parking area, restrooms in building on right



Figure 45 - Winding Stair backpacker camp dining area and fire ring



Figure 46 - Winding Stair backpacker camp improved tent area

Winding Stair Campground

Type: Campground Name: Winding Stair Campground GPS Lat/Lon: 34° 42.895'N 94° 40.530'W GPS Elevation: 1898 GPS Odometer: OT Mile marker:	Price for camping: \$10-20 per campsite per night Price for parking: 0 Showers available? Yes How many showers? 1 man, 1 woman Hot water? Yes Location from trail: 500 feet from Winding Stair trailhead
Notes: Many campsites available, \$10-20 per campsite, restrooms with running water, great view from Emerald Vista to valley below. Water is from well. When dry the restrooms are closed and porta potties are placed outside the restroom. Call forest service to check on water availability. Best to be prepared by bringing your own water. Very windy at times. In April 2006 experienced gusts that broke tent poles. Saw an awesome lightning show in April 2004. Ranger drives through the area regularly. Comes around in the morning to collect fee at campsites that are not paid at the registration box by the restrooms.	



Figure 47 - Winding Stair Campground

Winding Stair Campground Water Source

Site sequence: Water source 9 Given name: Winding Stair Campground GPS Lat/Lon: 34° 42.895'N 94° 40.530'W GPS Elevation: 1898	GPS Odometer: OT Mile marker: Location from trail: in restrooms
Notes: Water is from well. When dry the restrooms are closed and porta potties are placed outside the restroom. Call forest service to check on water availability. Best to be prepared by bringing your own water.	



Figure 48 - Winding Stair Campground Restrooms and Parking

Fire Tower Campsite

Site sequence: Campsite 11 Given name: Fire Tower GPS Lat/Lon: 34° 42.563'N 94° 40.623'W GPS Elevation: 2457 GPS Odometer: OT Mile marker: Fire ring? Remnants of one Num fire seats: None	Num tents: 8 Closest access point: Winding Stair Trailhead Nearest water source: Winding Stair Campground Cell phone coverage: Cingular good, Sprint chancy. Had 3 bars, but call would not go through. Firewood supply: Plentiful Location from trail: on trail
Notes: 10 foot rock pile and tower concrete piers are landmarks, located on ridge, very windy at times, great place for a Sunday morning service.	



Figure 49 - Fire Tower campsite. Fire ring in grass in left side of picture.



Figure 50 - Fire Tower rock pile

The Saddle Campsite

Site sequence: Campsite 12 Given name: The Saddle GPS Lat/Lon: 34° 42.097'N 94° 40.554'W GPS Elevation: 1780 GPS Odometer: OT Mile marker: Fire ring? Yes Num fire seats: 4	Num tents: 5-6 Closest access point: Winding Stair Trailhead Nearest water source: Winding Stair Campground Cell phone coverage: Cingular 2 bars. In saddle, so do not count on coverage in this area. Firewood supply: Plentiful Location from trail: on trail
Notes: Saw two deer in the area. Lots of rocks. When we visited the campsite there was a shelter. When going westbound, great first night campsite. At base of longest switchback segment in this 30 miles, going westbound up hill. Climb from saddle to the ridge is about 600'.	



Figure 51 - The Saddle campsite, with shelter, in April 2006. First saw shelter in October 2005.

Rough Mountain Campsite

Site sequence: Campsite 13 Given name: Rough Mountain GPS Lat/Lon: 34° 41.722'N 94° 40.420'W GPS Elevation: 2067 GPS Odometer: OT Mile marker: Fire ring? Yes Num fire seats: 5	Num tents: a lot Closest access point: Winding Stair Trailhead or Big Cedar trailhead Nearest water source: Winding Stair Campground or Big Cedar stream Cell phone coverage: Cingular 5 bars Firewood supply: Plentiful Location from trail: off trail to right 30 feet
Notes: Sparser trees, not much shade. When going westbound, great first night campsite.	



Figure 52 - Rough Mountain campsite

Road 6023 Intersection/Campsite

Site sequence: Campsite 14	Num fire seats: 6
Given name: Road 6023	Num tents: 10
GPS Lat/Lon: 34° 41.110'N 94° 39.560'W	Closest access point: Big Cedar Trailhead
GPS Elevation: 1611	Nearest water source: Big Cedar stream
GPS Odometer:	Cell phone coverage: Cingular
OT Mile marker:	Firewood supply: Plentiful
Fire ring? Yes	Location from trail: on trail

Notes: Great site, forest road 6023 access, just 2.5 miles from Big Cedar Trailhead. When going westbound, great first night campsite. Forest road access is on Highway 63 west of the town of Big Cedar. When westbound from Big Cedar, forest road 6023 is past the Big Cedar work center around the curve. Approximate coordinates are 34° 39.23'N 94° 42.68'W. The dirt road is good until it crosses the stream, then gets really bumpy. Four wheel drive would be preferred, especially if any rain. Continue straight, do not take the first right turn on the forest road. Saw a deer on this road. Will pass a big campsite on the left that looks like it is used by hunters or forest workers. Keep going past that campsite until you get the Ouachita Trail intersection sign. The campsite is to the left of the fire road when northbound. The vehicle can exit by continuing north on the trail, but it is a very bumpy and winding road. Suggest to go back down to Highway 63.



Figure 53 - Road 6023 campsite



Figure 54 - Road 6023 Entrance from Highway 63

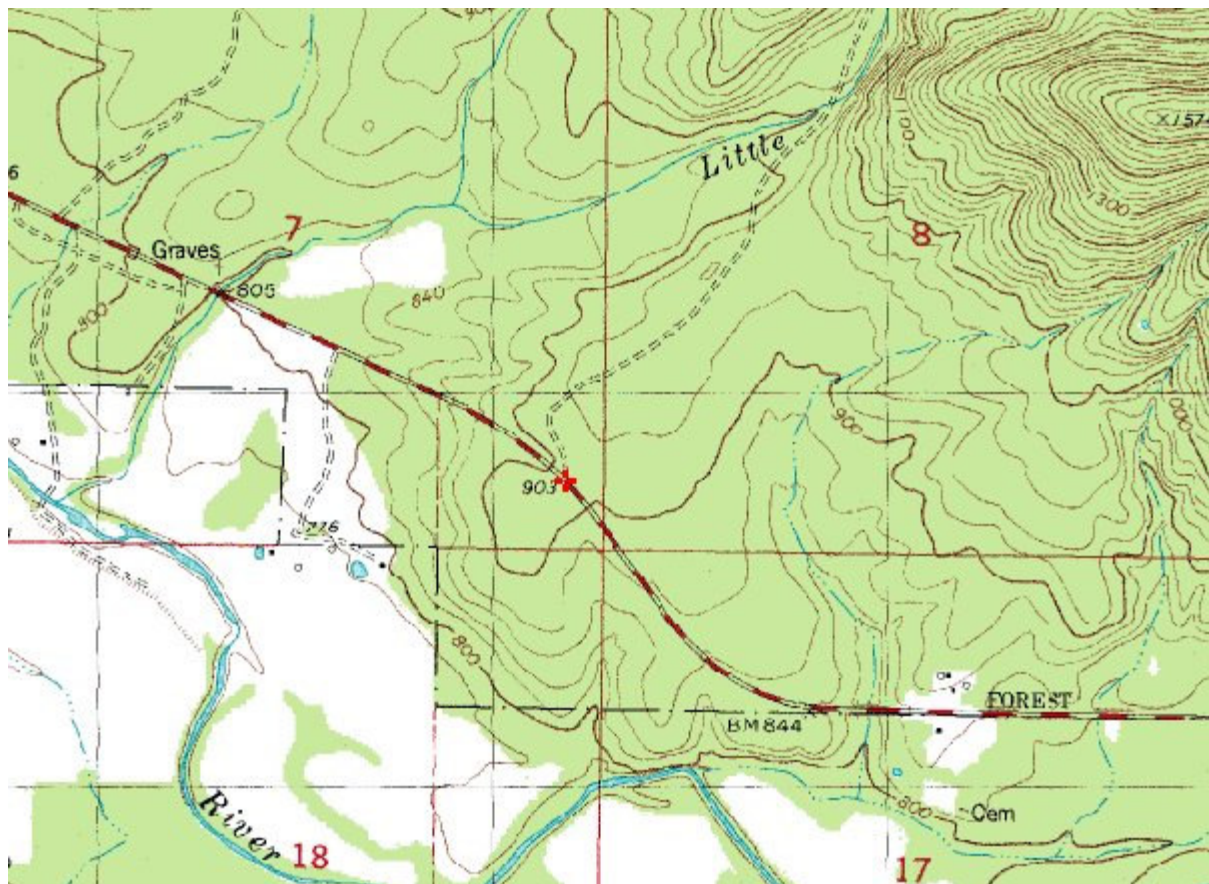


Figure 55 - Road 6023 intersection at Highway 63

Big Cedar Campsite

Site sequence: Campsite 15 Given name: Big Cedar GPS Lat/Lon: 34° 40.347'N 94° 39.226'W GPS Elevation: 1278 GPS Odometer: OT Mile marker: Fire ring? Yes	Num fire seats: 6 Num tents: 8 Closest access point: Big Cedar Trailhead Nearest water source: Big Cedar Creek Cell phone coverage: No Firewood supply: Plentiful Location from trail: down by stream
Notes: When going westbound, great first night campsite. GPS location is from main trail. Follow the side trail down at this point to the campsite.	



Figure 56 - Big Cedar campsite

Big Cedar Creek Water Source

Site sequence: Water source 10 Given name: Big Cedar Creek GPS Lat/Lon: 34° 40.059'N 94° 39.037'W GPS Elevation:	GPS Odometer: OT Mile marker: Location from trail: intersects
Notes: Running stream. Dry seasons water seems plentiful. When wet, can be running strong. Take care when crossing this stream when flowing. The lightning show in April 2004 also offered strong gusty rain showers that flooded this creek. It took the troop about an hour to cross this because the stream was flowing swiftly. The situation did offer a good team building exercise for the troop.	



Figure 57 - Big Cedar Creek

Big Cedar Trailhead

Type: Trailhead	GPS Odometer: 30
Name: Big Cedar trailhead	OT Mile marker: 31
GPS Lat/Lon: 34° 40.056'N 94° 38.975'W	Location from trail: at trail
GPS Elevation: 1076	Price for parking: 0
Notes: End (or start) of 30 mile trail. Parking is free. Nearest showers located at Winding Stair Campground, or Talimena State Park. Talimena State Park water supply seems to always be available. Two ways to get back to Talimena State Park: Highway 1 or Highway 63 at Big Cedar.	

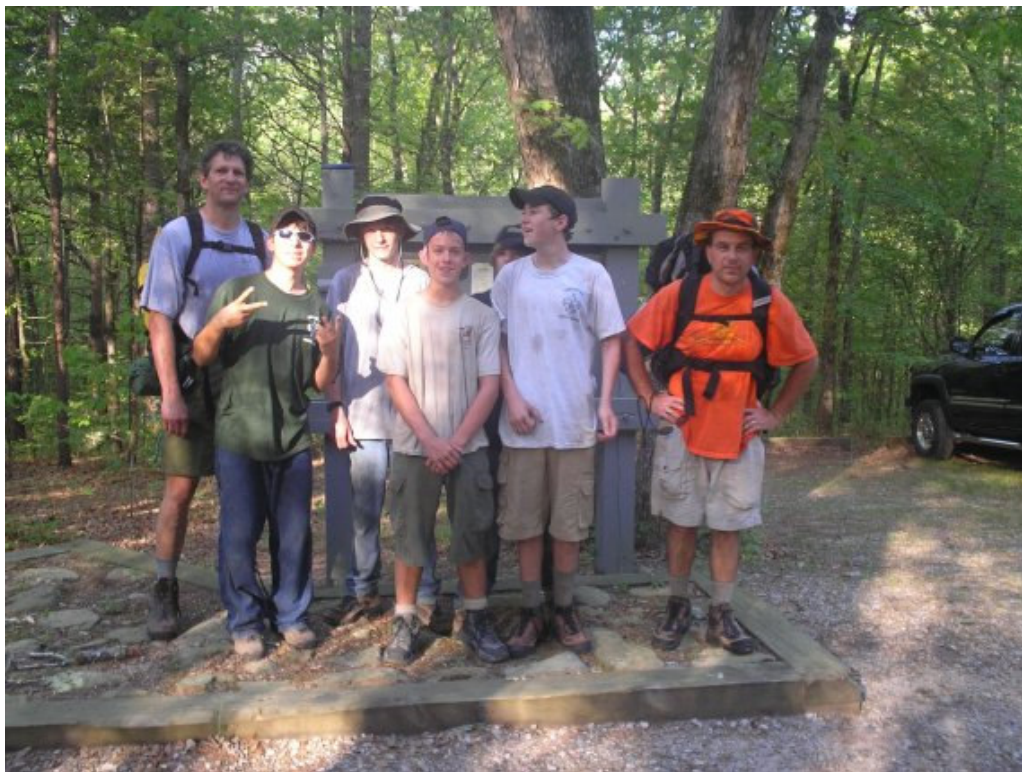


Figure 58 - Big Cedar trailhead. Troop 51 Scouts 30 miles, and much dirtier, later.



I Survived...





Figure 59 - Highway 259 Intersection



Figure 60 - Trail Sign heading east to Pashubbe Trailhead at Highway 259



Figure 61 - Mile Marker 31, less than a mile east of Highway 259

Water Source 11

Site sequence: Water source 11 Given name: GPS Lat/Lon: 34° 39.585'N 94° 38.104'W GPS Elevation:	GPS Odometer: OT Mile marker: Location from trail: intersects
Notes: Running stream.	

Water Source 12

Site sequence: Water source 12 Given name: GPS Lat/Lon: 34° 39.716'N 94° 37.382'W GPS Elevation:	GPS Odometer: OT Mile marker: Location from trail: intersects
Notes: Running stream.	

Water Source 13

Site sequence: Water source 13 Given name: GPS Lat/Lon: 34° 39.688'N 94° 36.859'W GPS Elevation:	GPS Odometer: OT Mile marker: Location from trail: intersects
Notes: Running stream.	

Pashubbe Campsite

Site sequence: Campsite 16 Given name: Pashubbe GPS Lat/Lon: 34° 39.609'N 94° 36.102'W GPS Elevation: 1196 GPS Odometer: OT Mile marker: Fire ring? Yes	Num fire seats: 0 Num tents: a lot Closest access point: Pashubbe Trailhead Nearest water source: None, or Pashubbe Creek. Cell phone coverage: Yes Firewood supply: Plentiful Location from trail: by Trailhead parking lot, west side
Notes: The scouts made a new fire ring at this location. No water source, must either pack in, or drive in. Great first night campsite for eastbound Big Cedar to Upper Kiamichi, last night for westbound trek. Drive vehicle to the campsite/trailhead from the access road from Highway 259. Lots of campsites that can handle big trailers. This area is popular with the hunters for their campsites. Pashubbe Creek is below the campsite a couple hundred feet. It was dry when we crossed it in November 2006. But it is inconvenient because of the climb to get the water back to the campsite.	



Figure 62 - Pashubbe Campsite

Pashubbe Trailhead

Type: Trailhead Name: Pashubbe trailhead GPS Lat/Lon: 34° 39.613'N 94° 36.09'W GPS Elevation: 1196	GPS Odometer: OT Mile marker: Location from trail: at trail Price for parking: 0
Notes: Great Ouachita Trail access point for vehicle. Take road from Highway 259 to the trailhead to meet the trekking crew. From this trailhead the Upper Kiamichi Trailhead (Arkansas state line) is 12 miles east.	



Figure 63 - Pashubbe Trailhead access road sign on Highway 259



Figure 64 - Pashubbe Trailhead Sign



Figure 65 - Ouachita Trail Distance Signs at Pashubbe Trailhead

Wilton Mountain Campsite

Site sequence: Campsite 17 Given name: Wilton Mountain GPS Lat/Lon: 34° 39.709'N 94° 33.213'W GPS Elevation: 1887 GPS Odometer: OT Mile marker: Fire ring? Yes	Num fire seats: 2 Num tents: a lot Closest access point: Pashubbe Trailhead Nearest water source: None Cell phone coverage: Yes Firewood supply: Plentiful Location from trail: on the right side of the trail (south)
Notes: Nice view all around when no leaves on the trees. No water up here. The campsite is on a ridge so will be windy most the time. Lots of rocks to deal with. Can see Wilton Mountain and Rich Mountain to the north through the trees, and the Kimaichi Mountains to the south across the Kiamichi River Valley.	



Figure 66 - Wilton Mountain Campsite



Figure 67 - View looking north from Wilton Mountain Campsite

Kerr Campsite

Site sequence: Campsite 18 Given name: Kerr GPS Lat/Lon: 34° 39.53'N 94° 32.723'W GPS Elevation: 1317 GPS Odometer: OT Mile marker: Fire ring? Yes	Num fire seats: 4 Num tents: 5 Closest access point: Kiamichi River Trailhead Nearest water source: Kiamichi River Cell phone coverage: Yes Firewood supply: Plentiful Location from trail: on the right side of the trail (south)
Notes: This campsite is located to the east of and just a little ways up the trail from the Kiamichi River Trailhead.	



Figure 68 - Kerr Campsite

Kiamichi River Trailhead

Type: Trailhead Name: Kiamichi River trailhead GPS Lat/Lon: 34° 39.606'N 94° 32.495'W GPS Elevation: 1260	GPS Odometer: OT Mile marker: Location from trail: at trail Price for parking: 0
Notes: Great Ouachita Trail access point for vehicle. I didn't actually drive this access road, but on the map it looks like road 6032 north from Highway 63 will get you here. Approximate coordinates are 34° 38.61'N 94° 32.61'W. Be aware that a shallow stream crossing in your vehicle might be necessary. Probably a truck with four wheel drive would work best during the wetter times of the year.	



Figure 69 - Kiamichi River Trailhead road gate; Road 6032 dead ends here



Figure 70 - Kiamichi Wilderness Sign at Kiamichi River Trailhead

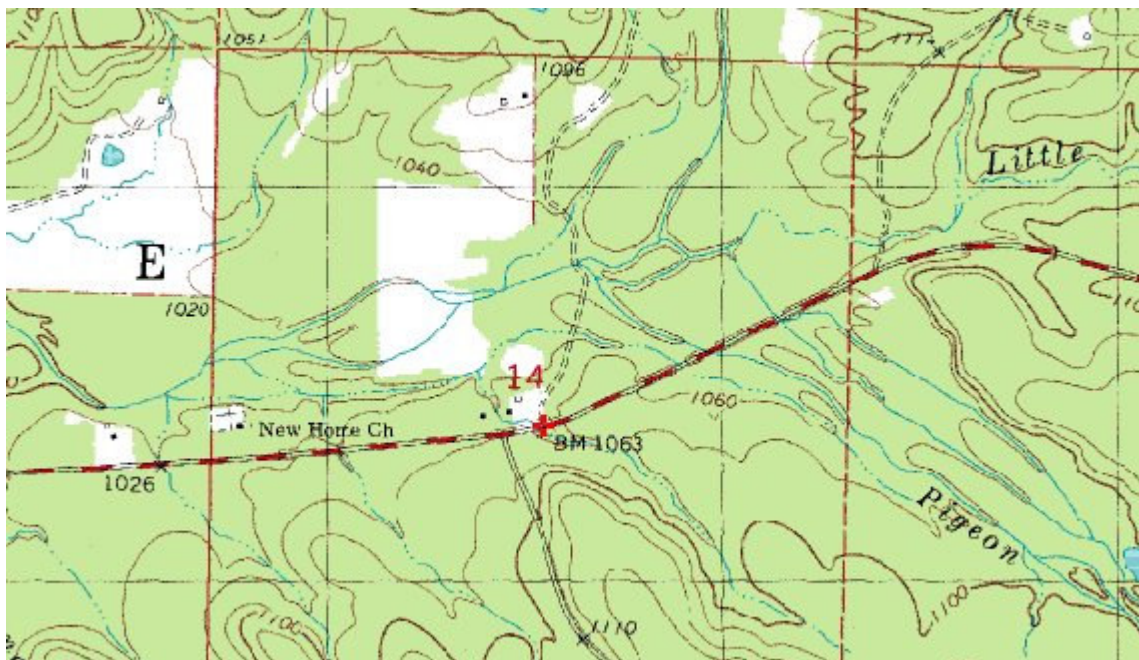


Figure 71 - Road 6032 intersetion at Highway 63

River Valley Campsite

Site sequence: Campsite 19 Given name: River Valley GPS Lat/Lon: 34° 39.811'N 94° 32.39'W GPS Elevation: 1080 GPS Odometer: OT Mile marker: Fire ring? Yes	Num fire seats: 7 Num tents: 4 Closest access point: Kiamichi River Trailhead Nearest water source: Kiamichi River Cell phone coverage: Yes, Cingular 2 bars Firewood supply: Plentiful Location from trail: on the right side of the trail, toward the river
Notes: This is a beautiful campsite right on the banks of the Kiamichi River. There is a great view looking south, where the widening Kiamichi River is nicely framed by Pine Mountain on the left. Nice campsite to stop at for the first night on an eastbound trek.	



Figure 72 - River Valley Campsite



Figure 73 - Looking South down the Kiamichi River from River Valley Campsite

Quentin Campsite

Site sequence: Campsite 19 Given name: Quentin GPS Lat/Lon: 34° 39.828'N 94° 32.422'W GPS Elevation: 1170 GPS Odometer: OT Mile marker: Fire ring? Yes	Num fire seats: 7 Num tents: a lot Closest access point: Kiamichi River Trailhead Nearest water source: Kiamichi River Cell phone coverage: Yes, Cingular 2 bars Firewood supply: Plentiful Location from trail: on the left side of the trail, away from the river
Notes: Nice campsite with a great fire ring.	



Figure 74 - Quentin Campsite

Kiamichi River Water Sources

Site sequence: Water source 14 Given name: Kiamichi River GPS Lat/Lon: GPS Elevation:	GPS Odometer: OT Mile marker: Location from trail: intersects multiple places
<p>Notes: Running river. The Kiamichi River is either very close to or intersects The Ouachita Trail many times from the River Valley Campsite to the Talimena Drive sign. For an eastbound trek the last place to get water is at the Talimena Drive sign. Westbound the last place is at the River Valley Campsite. During the wet season when there is a lot of rain and the river is flowing strong, so it might be best to bring some old tennis shoes to change into for all of the river crossings. The river was flowing pretty well when we were there in November 2006, and we crossed just fine on rocks without getting our hiking boots soaking wet. We had a couple of slips, but didn't saturate our boots or clothes enough to be uncomfortable hiking in them.</p>	



Figure 75 - One of the many crossings of the Kiamichi River (on an eastbound trek)

Pine Mountain Campsite

Site sequence: Campsite 20 Given name: Pine Mountain GPS Lat/Lon: 34° 40.176'N 94° 31.247'W GPS Elevation: 1198 GPS Odometer: OT Mile marker: Fire ring? Yes	Num fire seats: 2 Num tents: a lot Closest access point: Kiamichi River Trailhead Nearest water source: Kiamichi River Cell phone coverage: None Firewood supply: Plentiful Location from trail: on the right side of the trail
Notes: Most excellent campsite. Awesome fire ring. The best campsite on the Ouachita Trail in the 45 miles from Talimena State Park to Upper Kiamichi Trailheads. The campsite is on the banks of the Kiamichi River which provides a soothing sound of the river water as it flows by making its way down the Kiamichi River Valley. Nice campsite to stop at for the first night on an eastbound trek OR westbound trek.	



Figure 76 - Big fire ring at Pine Mountain Campsite



Figure 77 - Pine Mountain Campsite



Figure 78 - Pine Mountain Campsite is on the banks of the Kiamichi River

The Kiamichi River is in the background of this picture right behind the tent.

Kelsey Campsite

Site sequence: Campsite 21	Num fire seats: 7
Given name: Kelsey	Num tents: 5 to 7
GPS Lat/Lon: 34° 40.627'N 94° 29.681'W	Closest access point: Upper Kiamichi Trailhead
GPS Elevation: 1311	Nearest water source: Kiamichi River
GPS Odometer:	Cell phone coverage: None
OT Mile marker:	Firewood supply: Plentiful
Fire ring? Yes	Location from trail: left of trail
Notes: Doesn't seem to be a very popular campsite. But there is a nice grassy area for tents.	



Figure 79 - Kelsey Campsite

Riverside Campsite

Site sequence: Campsite 22	Num fire seats: 3
Given name: Riverside	Num tents: 7
GPS Lat/Lon: 34° 40.638'N 94° 29.308'W	Closest access point: Upper Kiamichi Trailhead
GPS Elevation: 1409	Nearest water source: Kiamichi River
GPS Odometer:	Cell phone coverage: None
OT Mile marker:	Firewood supply: Plentiful
Fire ring? Yes	Location from trail: right of trail
Notes: Right on the riverside.	



Figure 80 - Riverside Campsite

Talimena Drive Sign/Water Source

Type: Landmark Name: Talimena Drive Sign GPS Lat/Lon: 34° 40.604'N, 94° 28.542'W GPS Elevation: 1434	GPS Odometer: OT Mile marker: Location from trail: On the trail
Notes: This sign points in the direction of the rerouted Ouachita Trail. The old trail continued west from here. The reroute goes more northerly for a while and adds about a mile to the trail segment. The Ouachita Trail National Forest trail map shows 12 miles between Kashubbe and Upper Kiamichi trailheads, but reality is actually 13 miles because of this reroute. This location is the last water source from the Kiamichi River. The river is to the right of the trail, south of the sign.	



Figure 81 - Talimena Drive Sign

Upper Kiamichi Campsite

Site sequence: Campsite 23 Given name: Upper Kiamichi GPS Lat/Lon: 34° 41.3'N 94° 28.58'W GPS Elevation: 2132 GPS Odometer: OT Mile marker: Fire ring? Yes	Num fire seats: 3 Num tents: 5 Closest access point: Upper Kiamichi Trailhead Nearest water source: None Cell phone coverage: Yes Firewood supply: Plentiful Location from trail: left of trail 50 feet
Notes: Last campsite before the Upper Kiamichi Trailhead. Good for last night on the trail before the trailhead for westbound trek.	



Figure 82 - Upper Kiamichi Campsite



Figure 83 - Mile Marker 46 on the Ouachita Trail

Upper Kiamichi Trailhead

Type: Trailhead Name: Upper Kiamichi trailhead GPS Lat/Lon: 34° 41.632'N 94° 27.351'W GPS Elevation: 2573	GPS Odometer: OT Mile marker: Location from trail: to the north at Highway 1 Price for parking: 0
Notes: End, or beginning, of the Big Cedar to Upper Kiamichi trail segment. Leave car here for beginning or end of the trail segment.	



Figure 84 - Upper Kiamichi Trailhead Registration Box



Figure 85 - Trail Distance sign at Upper Kiamichi Trailhead



Figure 86 - Arkansas State Line parking area